

MAY 2023

# Metals for the CLEAN AIR REVOLUTION



**CLEAN AIR**  
METALS INC

TSXV AIR  
OTCQB CLRMF  
FRA CKU

CLEANAIRMETALS.CA

Clean Air Metals' flagship asset is our 100% owned Thunder Bay North Platinum-Palladium-Copper-Nickel Project which includes the Current and Escape intrusions and related deposits

## Current Deposit

- Indicated Resource of 8.0 million tonnes grading 2.7 g/t 2PGE<sup>1</sup>, 0.33% Cu<sup>1</sup> and 0.22% Ni<sup>1</sup>
- Inferred Resource of 1.4 million tonnes grading 1.7 g/t 2PGE<sup>1</sup>, 0.25% Cu<sup>1</sup> and 0.20% Ni<sup>1</sup>

## Escape Deposit

- Indicated Resource of 5.8 million tonnes grading 2.6 g/t 2PGE<sup>1</sup>, 0.52% Cu<sup>1</sup> and 0.28% Ni<sup>1</sup>
- Inferred Resource of 0.6 million tonnes grading 1.5 g/t 2PGE<sup>1</sup>, 0.29% Cu<sup>1</sup> and 0.17% Ni<sup>1</sup>

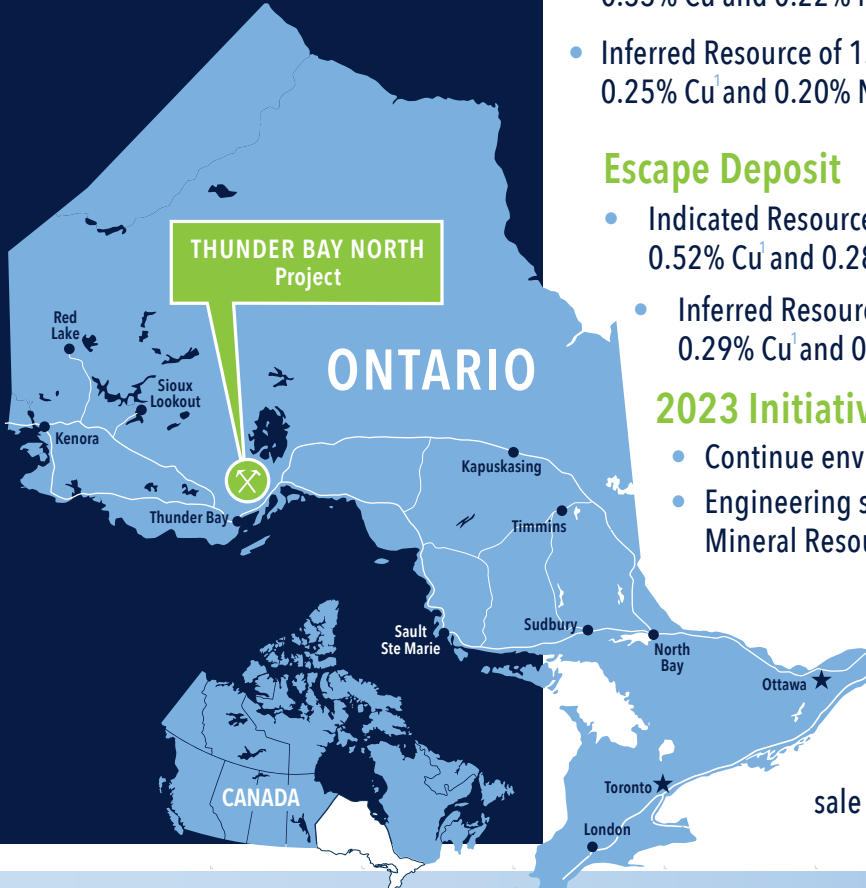
## 2023 Initiatives

- Continue environmental baseline studies and permitting
- Engineering studies on economics around the new (May 4, 2023) Mineral Resource Estimate

**Social License to Operate** through agreement with three First Nation communities

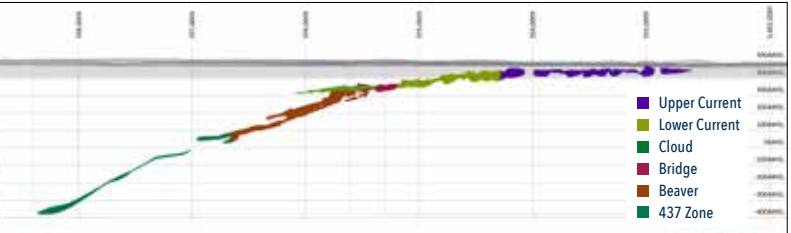
**Mr. Jim Gallagher, PEng, Executive Chair**  
most recently CEO of North American Palladium at sale of company to Impala Platinum Holdings for \$1 Billion

Note 1. Insitu



## Grade

Class Deposit	Tonnes ktonnes	Density t/m <sup>3</sup>	Pt g/t	Pd g/t	Au g/t	Ag g/t	Cu %	Ni %	2PGE g/t
Indicated - Current	8,223	2.94	1.4	1.31	0.09	1.98	0.33	0.22	2.7
Indicated - Escape	5,810	3.11	1.17	1.46	0.11	3.32	0.52	0.28	2.6
<b>Total Indicated</b>	<b>14,033</b>		<b>1.31</b>	<b>1.37</b>	<b>0.1</b>	<b>2.53</b>	<b>0.41</b>	<b>0.25</b>	<b>2.7</b>
Inferred - Current	1,641	2.95	0.87	0.79	0.07	1.91	0.32	0.2	1.7
Inferred - Escape	631	3.01	0.67	0.8	0.06	1.67	0.29	0.17	1.5
<b>Total Inferred</b>	<b>2,272</b>		<b>0.81</b>	<b>0.79</b>	<b>0.07</b>	<b>1.84</b>	<b>0.31</b>	<b>0.19</b>	<b>1.6</b>



Current Deposit Looking SW

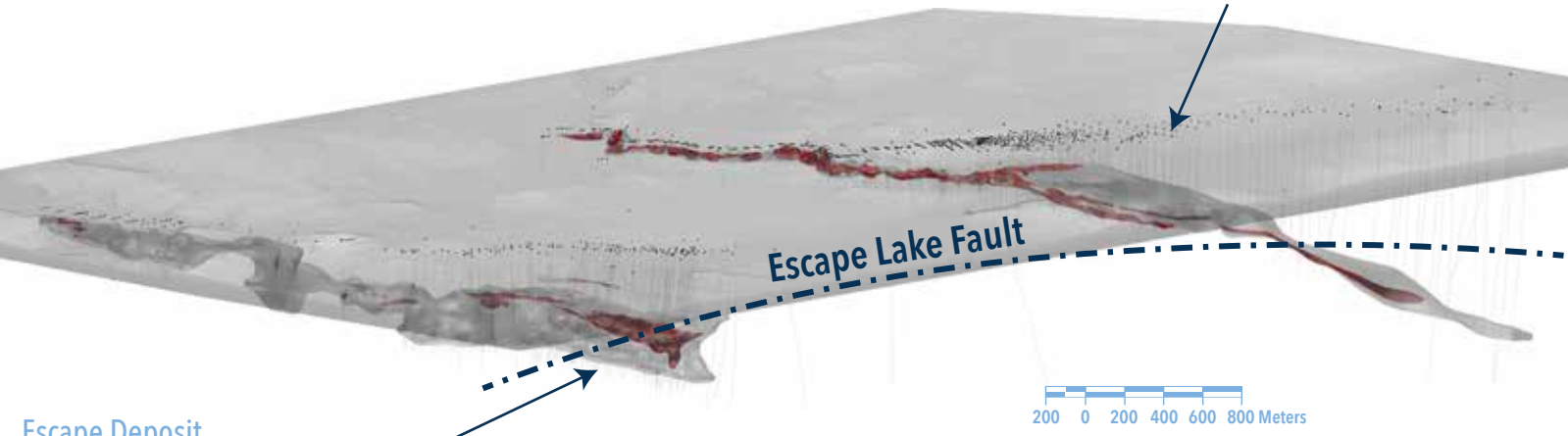


Escape Deposit Looking W

# Thunder Bay North Critical Metals Resource Update

## Current Deposit

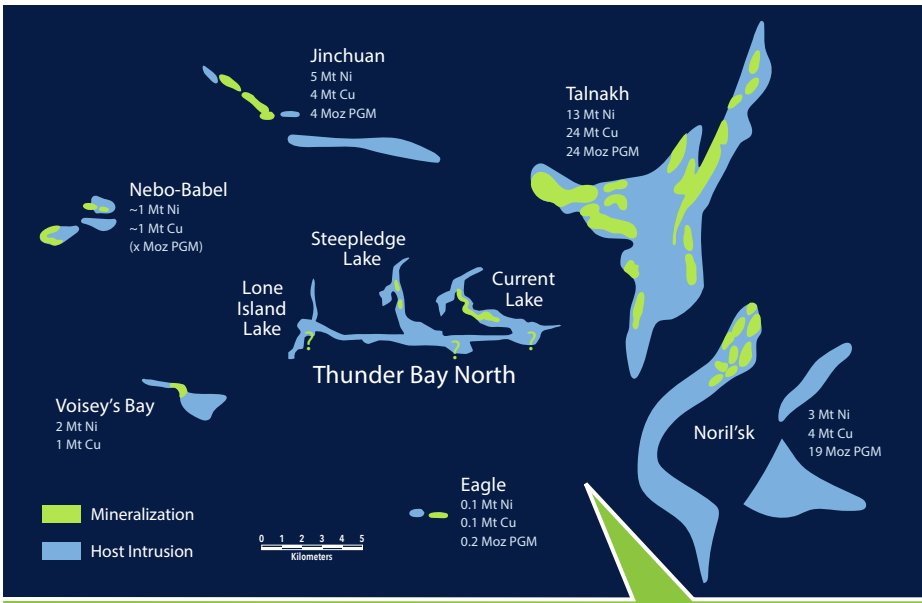
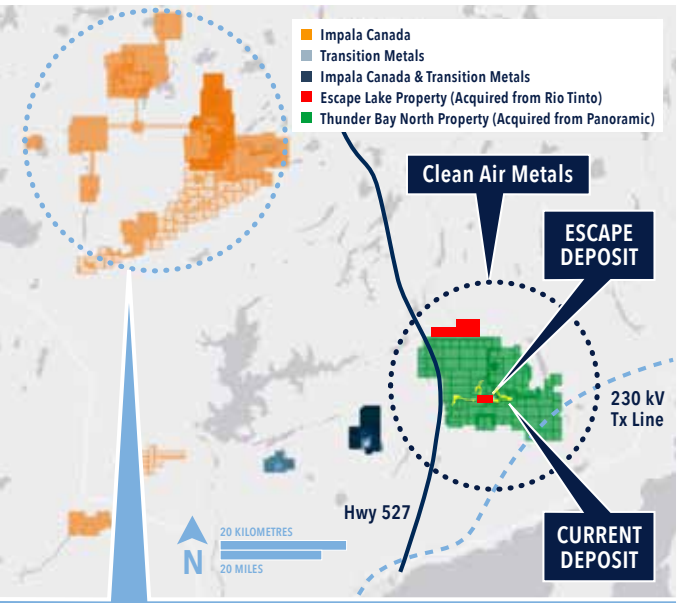
- Indicated Resource of 8.0 million tonnes grading 2.7 g/t 2PGE<sup>1</sup>, 0.33% Cu<sup>1</sup> and 0.22% Ni<sup>1</sup>
- Inferred Resource of 1.4 million tonnes grading 1.7 g/t 2PGE<sup>1</sup>, 0.25% Cu<sup>1</sup>, 0.20% Ni<sup>1</sup>



## Escape Deposit

- Indicated Resource of 5.8 million tonnes grading 2.6 g/t 2PGE<sup>1</sup>, 0.52% Cu<sup>1</sup>, 0.28% Ni<sup>1</sup>
- Inferred Resource of 0.6 million tonnes grading 1.5 g/t 2PGE<sup>1</sup>, 0.29% Cu<sup>1</sup>, 0.17% Ni<sup>1</sup>

\*Drill-Indicated lithological shells



Impala Canada Lac des Iles Mine Proven and Probable Reserves: 2.81 Moz Palladium (44.6 Mt @ 2.03 g/t Pd) *Implats Annual Report, 2021*

Footprints (to Scale) of Magma Conduits Hosting "World Class" Ni-Cu-(PGE) Deposits

**Jim Gallagher** CEO  
705.690.7997  
jgallagher@cleanairmetals.ca

TSXV AIR  
OTCQB CLRMF  
FRA CKU



1004 Alloy Drive, Thunder Bay, Ontario P7B 6V1

CLEANAIRMETALS.CA